

# CeraSeal

Calcium Silicate-based  
Bioceramic Root Canal Sealer

## Superb Biocompatibility

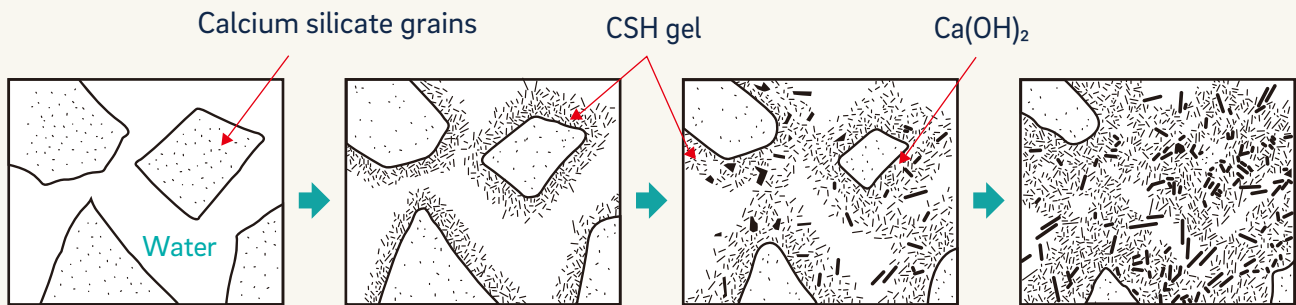
Calcium silicate-based CeraSeal provides optimal biocompatible environment to tissues in the root canal. It is obviously the next generation bioceramic-sealer which has excellent sealing ability and biocompatibility



[www.facebook.com/Metabiomed.Endodontics](https://www.facebook.com/Metabiomed.Endodontics)

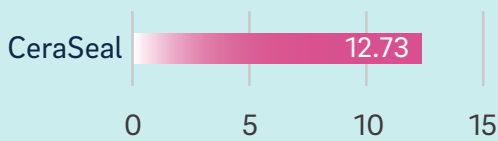


# It's Calcium Silicate!

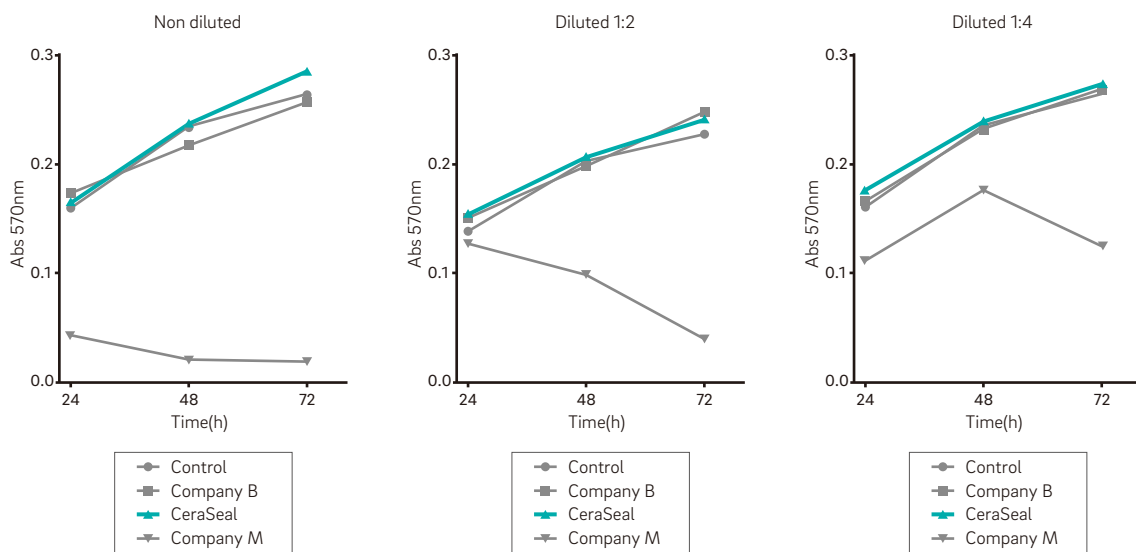


Calcium silicate produces CAH(Calcium Aluminate Hydrate) gel and CSH(Calsium Silicate Hydrate) gel by absorbing the moisture from surrounding tissues in the root canal and some crystallization of Calcium Hydroxide ( $\text{Ca(OH)}_2$ )

## Anti Microbial, High Biocompatibility



Thanks to Calcium Hydroxide ( $\text{Ca(OH)}_2$ )'s high pH, it has an antimicrobial action that eliminates the bacteria present in the root canal.

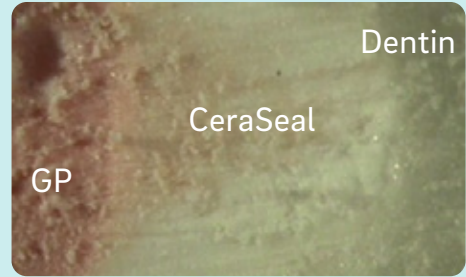


Cytocompatibility, bioactivity potential, and ion release of three premixed calcium silicate-based sealers, 2019  
By Rodriguez-lozano F.J. et al

This test result shows that even if CeraSeal has high pH(12.73), it has the excellent biocompatibility. So it's harmless to human body, also it has excellent biocompatibility understandably.

# Perfect Sealing Ability

Moisture in the dentinal tubules and Calcium Silicate's chemical reaction produce crystallization of Calcium Hydroxide. Thanks to its reaction, CeraSeal is perfectly and fully hermetic in the root canal and prevents from the propagation of bacteria.

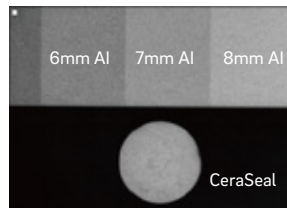


# No shrinkage, Nor Expansion

CeraSeal never shrinks in the root canal. In addition, it also doesn't expand. So it prevents from bacteria and odontoclasia by still keeping its volume in there. Therefore, one cone technique obturation also can be done.

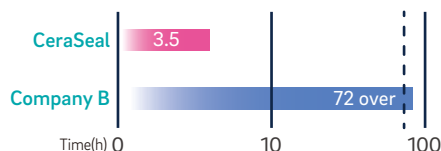
# Be the Professional with CeraSeal

- Excellent Radiopacity : 8mm Al



- Setting Time : Shorter than any others.

Therefore it helps to prevent from wash-out phenomenon

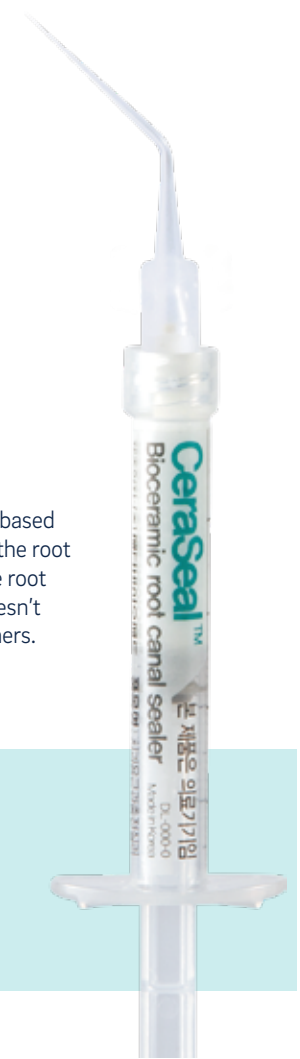


The wash-out phenomenon can happen if the MTA or MTA based sealer is not sufficiently cured or the exudate is produced in the root canal. Therefore, the wash-out phenomenon means that the root canal sealer is washed away by physical forces. CeraSeal doesn't induce this situation by curing absolutely faster than any others.



- Easy to Use

It's premixed sealer.



# Clinical Cases :

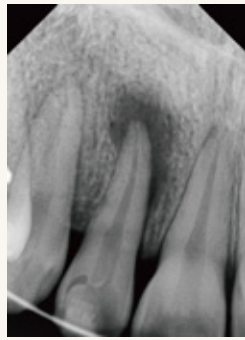


Before



After

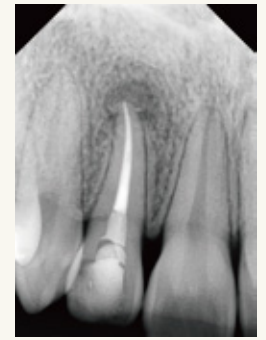
Courtesy of Dr. Walter Vargas Obando



Before

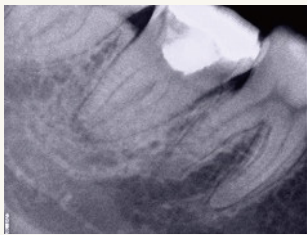


After

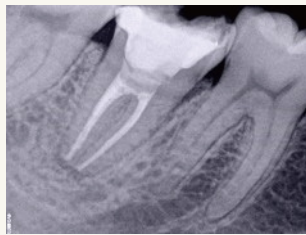


After 10 month

Courtesy of Dr. Talal Al-Nahlawi



Before



After

Courtesy of Dr. Jenner O. Argueta



Before



After

The Picture of Page1 : Courtesy of Dr. Talal Al-Nahlawi

## Physical Properties

Setting Time	3.5 h
pH	12 <
Radiopacity	8mm <

## Components

CeraSeal	Pre-mixed syringe x 1EA (2g) Intra canal tips x 10EA
----------	---

**Meta Biomed Co., Ltd – Head Office**  
270 Osongsaengmyeong1-ro,  
Osong-eup  
Heungdeok-gu, Cheongju-si,  
Chungbuk, Korea  
Phone: +82 43 216 0433  
dental@meta-biomed.com  
www.meta-biomed.com

**Meta Biomed Inc.**  
3015 Advance Lane  
Colmar, PA 18915,  
USA  
Phone: +1 267 282 5893  
america@metabiomed-inc.com  
www.metabiomedamericas.com

**Meta Biomed Europe GmbH**  
Wiesenstr. 35,  
45473 Mülheim an der Ruhr,  
Germany

Phone: +49 208 309 91910  
europe@meta-europe.com  
www.meta-europe.com

DO-054-3

